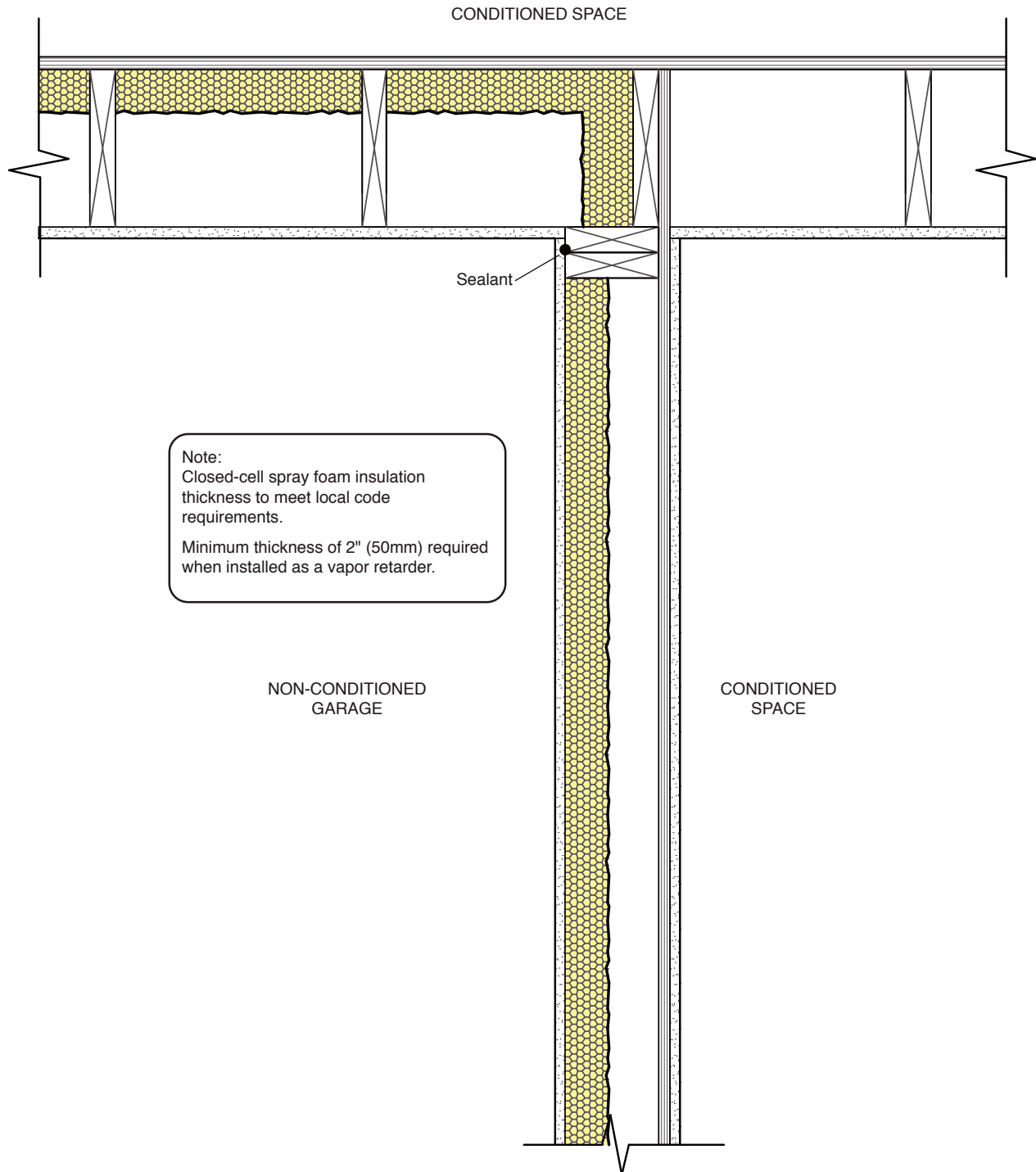


## Wall Section, Garage with Conditioned Space Above and Adjoining

D1.8  
Dec. 5, 2011



Note:  
Closed-cell spray foam insulation  
thickness to meet local code  
requirements.  
Minimum thickness of 2" (50mm) required  
when installed as a vapor retarder.

NON-CONDITIONED  
GARAGE

CONDITIONED  
SPACE